



LA - II.kat. 30%PES,42%ACRYL,28%POP



LB - II.kat.30%PES,42%ACRYL,28%POP



LC - II.kat. 30%PES,42%ACRYL,28%POP



LD - II.kat. 30%PES,42%ACRYL,28%POP



LE - II.kat.30%PES,42%ACRYL,28%POP



LF-II.kat. 30%PES,42%ACRYL,28%POP



LG - II.kat 30%PES,42 %ACRYL,28 %POP



LH - II.kat. 40%PES,35%PAN,15%POP



LI - II.kat. 40%PES,35%PAN,15%POP



LJ - II. kat. 40%PES,35%PAN,15%POP



LK - II.kat. 40%PES,35%PAN,15%POP



LL - II.kat. 33%PES,45%PAN,22%POP



LM - II.kat. 33%PES,45%PAN,22%POP



LN - II.kat. 33%PES,45%PAN,22%POP



LO - II.kat. 33%PES,45%PAN,22%POP



LP - II.kat. 33%PES,45%PAN,22%POP

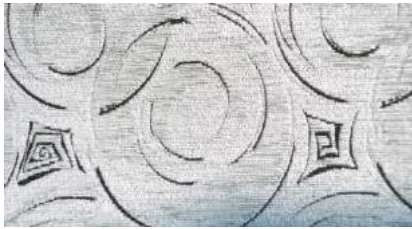


LQ -II. kat. 33%PES,45%PAN,22%POP



LR -II. kat. 33%PES,45%PAN,22%POP





LS - II.kat. 33%PES,45%PAN,22%POP



LT - II.kat. 40%PES,35%PAN,15%POP



LU - II.kat. 40%PES,35%PAN,15%POP



LV - II.kat. 40%PES,35%PAN,15%POP



LX -II.kat. 40%PES,35%PAN,15%POP



LY - II.kat. 40%PES,35%PAN,15%POP



ND - II.kat.46%PES,40%PAN,14%VS



NE -II.kat. 46%PES,40 PAN,14 % VS



NF - II.kat. 46%PES,40%PAN,14%VS



NG - II.kat. 46%PES,40%PAN,14%VS



NH - II.kat. 46%PES,40%PAN,14%VS



NI - II.kat. 46%PES,40%PAN,14%VS



NJ - II.kat. 46%PES,40%PAN,14%VS



NK - II.kat. 46%PES,40%PAN,14%VS



NL - II.kat. 46%PES,40%PAN,14%VS



RA -II.kat. 38%PES,38%PAN,24% POP



RB - II.kat. 38%PES,38%PAN,24% POP



RC -II. kat. 38%PES,38%PAN,24% POP





**RD-II.kat. 38%PES,38%PAN,24% POP**



**RE -II.kat. 38%PES,38%PAN,24% POP**



**RF - II.kat.38%PES,38%PAN,24% POP**



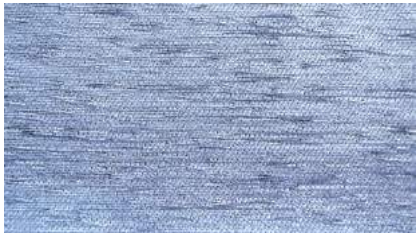
**RG -II.kat. 38%PES,38%PAN,24% POP**



**RH -II.kat. 38%PES,38%PAN,24%POP**



**RI -II. kat. 38%PES,38%PAN,24%POP**



**RJ - II.kat. 38%PES,38%PAN,24%POP**



**RK - II.kat. 38%PES,38%PAN,24%POP**



**RL - II.kat. 38%PES,38%PAN,24%POP**



**RM - II.kat. 38%PES,38%PAN,24%POP**



**RN - II.kat. 38%PES,38%PAN,24%POP**



**SA - II.kat. 32%PES,47%PAN,21%POP**



**SB -II. kat. 32%PES,47%PAN,21%POP**



**SC - II.kat. 32%PES,47%PAN,21%POP**



**SD - II.kat. 32%PES,47%PAN,21%POP**



**SE - II.kat. 58%PES,42%PAN**



**SF -II. kat. 58%PES,42%PAN**

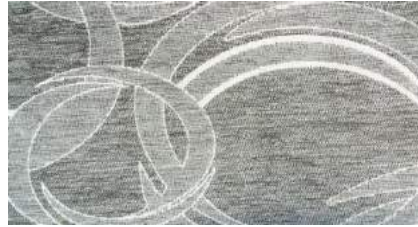


**SG - II.kat. 58%PES,42%PAN**





SH - II.kat. 58%PES,42%PAN



SI -II. kat. 58%PES,42%PAN



SJ - II.kat. 58%PES,42%PAN



SK - II.kat. 58%PES,42%PAN



SL -II.kat.68%PES,31%PAN,1% METAL



SM-II.kat.68%PES,31%PAN,1% METAL



SN-II.kat.68%PES,31%PAN,1% METAL



SO-II.kat.68%PES,31%PAN,1% METAL



SP-II.kat.68%PES,31%PAN,1% METAL



SQ-II.kat.68%PES,31%PAN,1%METAL



SR - II.kat. 60%PES,40%PAN